

Stretch Skater Dress



Instructions

Title: Stretch Skater Dress

Design: By Katy Inch

Suggested Fabric: Moderate knits - The pattern has been designed for fabrics with 35% stretch.

Introduction

Bring in the summer with this beautiful, yet, very comfortable skater dress. Just pull on, and you're ready to go.



YOU WILL NEED:

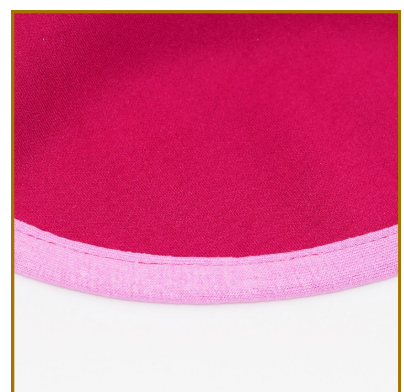
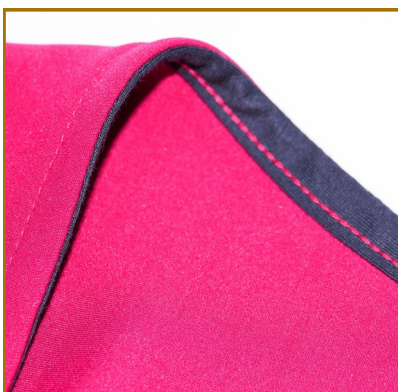
- >> [Pattern](#)
- >> [Measure Chart](#)
- >> Fabric
- >> Rotary Cutter/Scissors
- >> Choice of threads
- >> and your FABULOUS babylock machine



Finishing Techniques:

You can use various methods to finish your garment, below are some examples.

1. Facings
2. Decorative thread and stitches
3. Binding used as a facing
4. Double fold binding

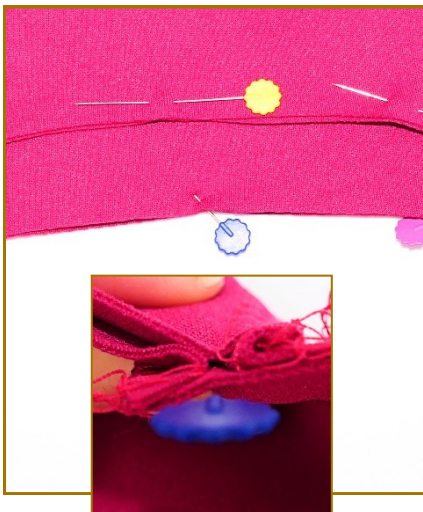




If using facings, finish the bottom edge.
A 4 thread overlock has been used on this dress.



Join the shoulder seams together on the bodice pieces.
Do the same for the facings.
Press the seams in different directions.



With shoulder seams pressed in different directions, join the facing and bodice together at the collar, right sides together.



Turn right side out and press the seam.
Understitch the seam to the facing, you can use a chain stitch on your cover stitch machine, or use a stretch or zigzag stitch on your sewing machine.



Facing side up, roll one side of the bodice (Burrito style.)



Pull facing over roll and bodice under roll.



With the roll sandwiched between the layers, pin the facing and bodice together at the armhole.

Stitch, making sure to not catch the roll.



Pull the roll through, so that right sides are on the outside.

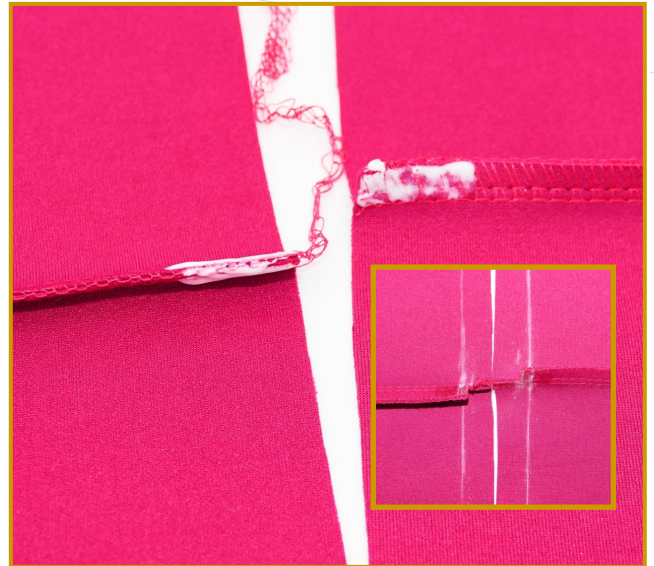
Repeat the the process again for the other side.





Press the armhole.

Understitch seam to facing.



Using Fray Check, seal the ends. Let dry.

Mark the 1cm seam allowance and 7.5mm from the raw edge.

Snip 7.5mm into the seam allowance, along the right needle line.

Snip up to the right needle line.



Join the sides, making sure to line up the facing joins.

When sewing, make sure one seam lies up, and the other lies down.

Line the 1cm seam allowance line with the left needle marking on the foot. By doing this, you should then catch the remaining 2.5mm of the seam allowance, you have just cut out.



Cut up to the left needle stitch line where the joins meet.

You should now have a cross, this will help to lessen the bulk.

Fold facing down, so wrong sides are together, and press.





Join the skirt to the bodice, right sides facing.

The skirt will fit the bodice without having to stretch. If unsure, use the 1/4 method to ensure that it is evenly pinned.



Hem the skirt with your preferred finish.

Slip it on, grab your shades, and strut your stuff in the sun!



Final Word



Designed by Katy Inch for babylock UK

