

# Toaster Sweater



*Instructions*

## Title

Design: Toaster Sweater by Sew House Seven

Instructions: Katy Inch

### Introduction:

This easy to make, and wear sweater is a must for those cosy Winter days. Can be made solely on an overlocker, and with the addition of a Coverstitch you can add some decorative finishing touches! I guarantee you won't stop at one.



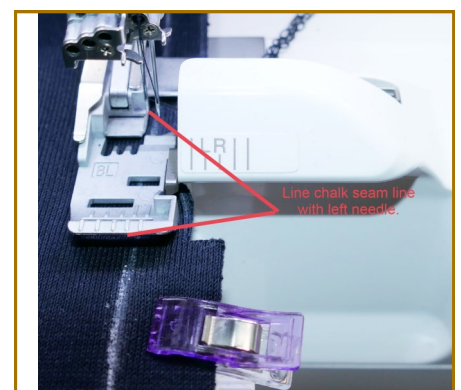
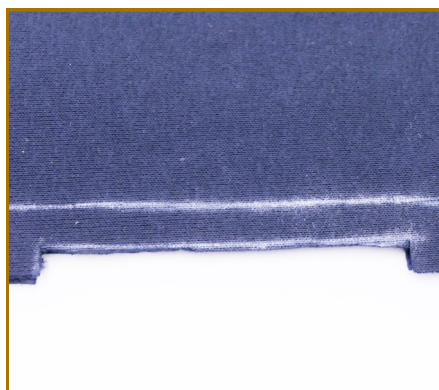
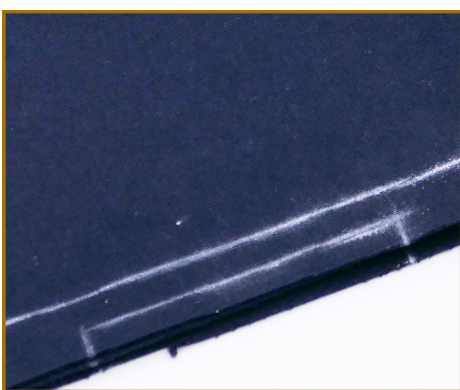
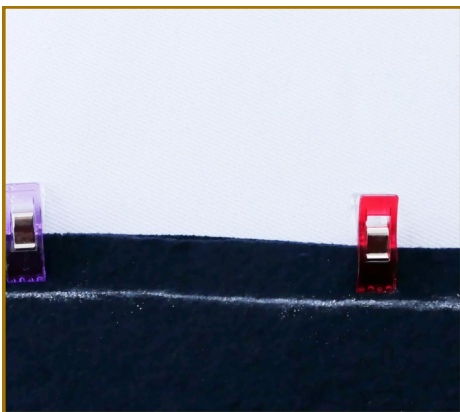
### You will need:

- >> Pattern cut to size.
- >> Chalk/Erasable pen
- >> Scissors
- >> Pins/ Clips
- >> YOUR WONDERFUL BABYLOCK COMBINATION OR OVERLOCKER!

## TIPS AND TRICKS

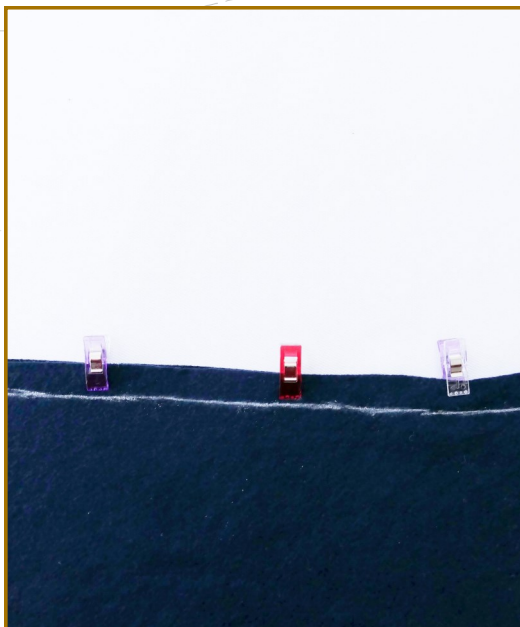
Starting and finishing, can be tricky when overlocking in the round. Here is a quick tip to help with this.

1. Mark your seam allowance (for this pattern 1.5cm)
2. Using the stitch width measurement you have chosen (6mm), measure from the seam allowance line that distance. Mark a 2" line, and then mark 2 small lines towards the raw edge. 2" will allow more than enough room from the needle to the knife.
3. Using the box you've just marked, cut through all layers.
4. Ease the fabric under the foot. Using the seam allowance line, line this up with the left needle (if using a 4thread OL), and the left needle marking on the foot. You are now ready sew.

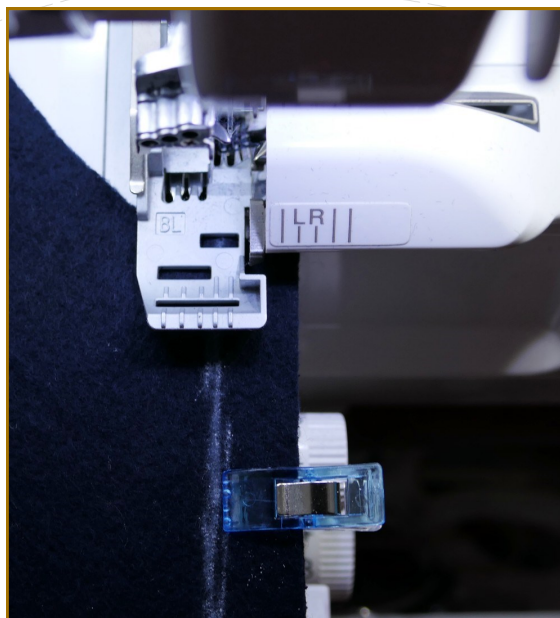


For more creative ideas visit:  
[www.babylock.uk/campus](http://www.babylock.uk/campus)





Line up the front sleeve to the front bodice, matching the notches. Mark the seam allowance (1.5cm), the knife will trim off the excess.



Line the seam allowance line up with the left needle marking on the presser foot. Sew, making sure that as you guide the fabric the line stays inline with presser foot marking. Press seam towards the bodice.

Match the other sleeve to the other side of the front bodice, and repeat.

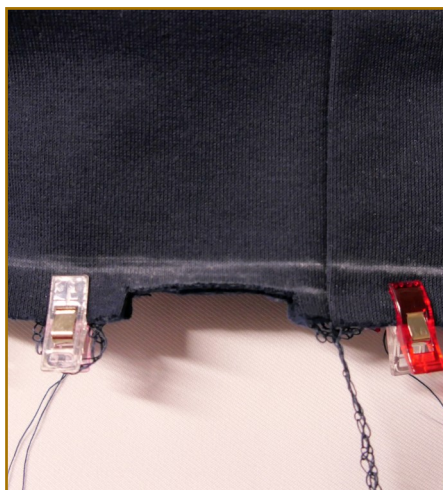
Now, line the back bodice in the same way.



To create the neck band, overlock the shorter edges together, remember to mark the seam allowance and follow the line.

Fold over, wrong sides together, and press.

Match the neckline to the bodice and sleeves, make sure the neckline seam matches back bodice notches.



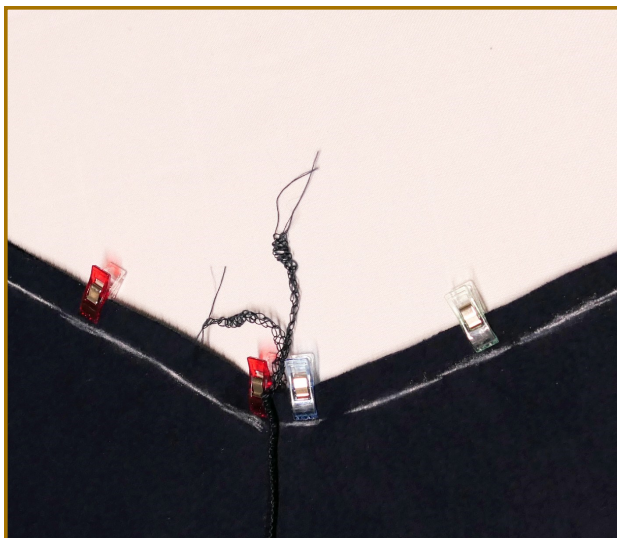
Using the cut out method from the tips and tricks, overlock the neckline to the bodice and sleeves.



One way to finish a seam, is to use a needle, and thread the excess thread through the already sewn stitches. Use some Fray Check to secure the thread in place.







To join the sleeves and bodice together, match all the notches/ markings. Try to ensure that the seams from bodice and sleeves stay facing down (they should be after pressing.)

Tie the loose ends together, this should keep the joins together and lined up.

Use the same technique as before, line the seam allowance line with the marking of the left needle on the foot, and sew.

When you get to the armpit, sew slowly, and push the fabric gently, so that corner becomes straight. This will allow you catch all of the fabric.



Using the same technique as above, join the cuffs together.

Remember to push the fabric gently to keep the line straight. A slight crease will form in the fabric, don't worry, this will uncrease.



Fold the cuff in half, and make a snip up to the left needle line. DO NOT cut the left needle line.

Press the seam allowance in the different directions. This will make the fold lay flatter. This technique can be used on all folds.





Add the cuffs and waistband using the same method as the neckband.



Remember to line up the seams.



Now you have a toasty Toaster Sweater, curl up and enjoy the cosiness of your new wardrobe staple.....or better yet, make another one!



